

Special Announcement From NDSU Extension & Logan County Weed Board

In recent weeks, a weed of special concern identified as **SPOTTED WATER HEMLOCK** has been located in several counties of North Dakota, including Emmons County and Logan County. This weed has been in the area for many years but with our wet weather pattern this year it has caught the attention of area farmers, ranchers, and extension agents. The plant is easily identifiable now because it stands three to six feet tall having small white petals on each flower, having an umbrella shape. The stems are purple-striped or mottled and are hollow.

This weed thrives in wet areas, especially with shallow standing water. **All parts of the plant are TOXIC, with the roots being most toxic.** The biggest threat for our area

would be to livestock if these plants end up in hay bales, as the plant grows in areas that are commonly used for hay ground. If you happen to see this weed as you are out making hay, we encourage you to avoid it if you can or at least prevent it from going into the baler. Current information suggests it could take as little as 3.5 oz of plant material to kill an average cow or horse.

There appears to be limited knowledge of this particular weed and its potential toxicity from producers in this area. Our office and the Logan County Weed board members thought it was an important to provide a public service announcement to hopefully prevent any unnecessary livestock losses. We have located this weed in many

parts of Logan County with a high concentration around the Beaver Creek drainage system, including the Beaver Lake area.

Unfortunately, this weed can be difficult to control, primarily due to its preferred growing locations of wetlands. If it is too wet to get a mower in to an infected area, you may consider hand pulling. **Be sure to wear gloves and other protective clothing.** Certain herbicides can be effective but they should be approved for use in water.

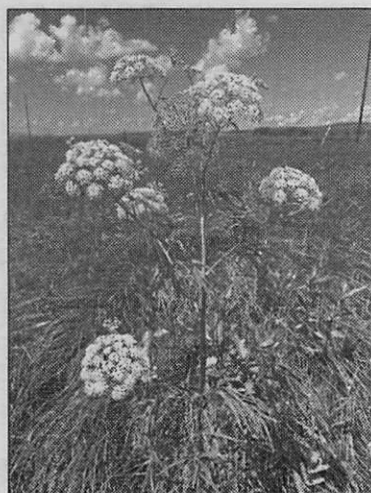
If you would like more information or wanted confirmation on identification, you can call the Extension office at 701-754-2504. There is also more information on our Extension Facebook (NDSU Extension-Logan County) and X page (@Logan-CountyExt).



Young Plant (spring)



Mature flowering plant (June)



Mature flowering plant (July)